

Quick Start Guide



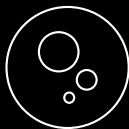
Chilled



Ambient



Hot



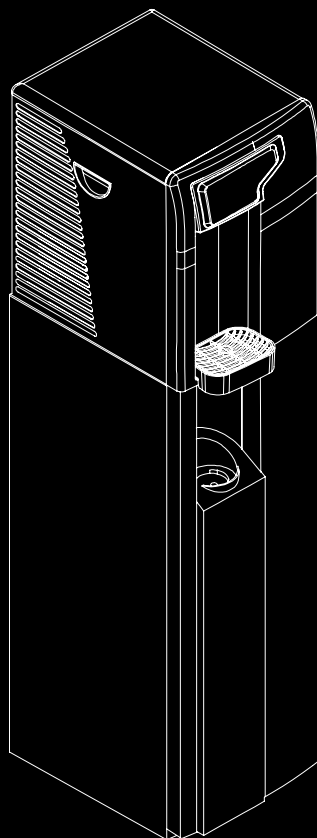
Sparkling

Dispense Options

Chilled & Ambient
Chilled & Hot
Chilled & Sparkling
Chilled, Hot & Sparkling

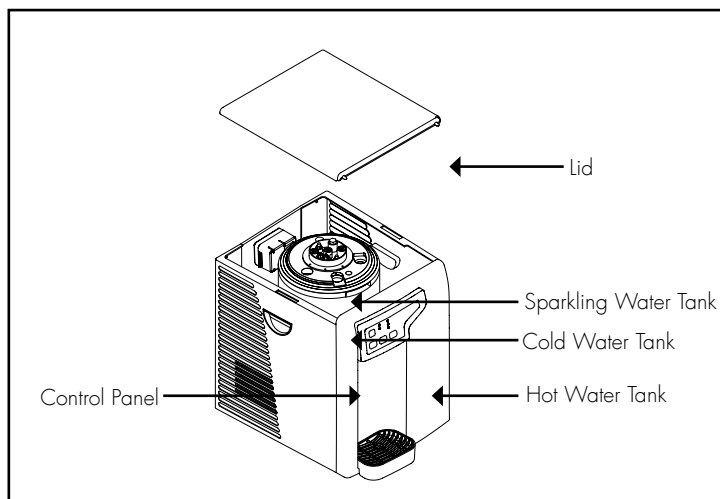
Contents

Page No	Description
2	Major Components Water & CO2 Connection
3	CO2 Bottle Installation
4	Level Sensor Assembly
5	Cold Water Connection & Operation
7	Functions & Controls General Safety
8	Isolation & Removal
9	Sanitisation Guide
11	Leak Detection
12	Emptying The Carbonation Tank
13	Troubleshooting

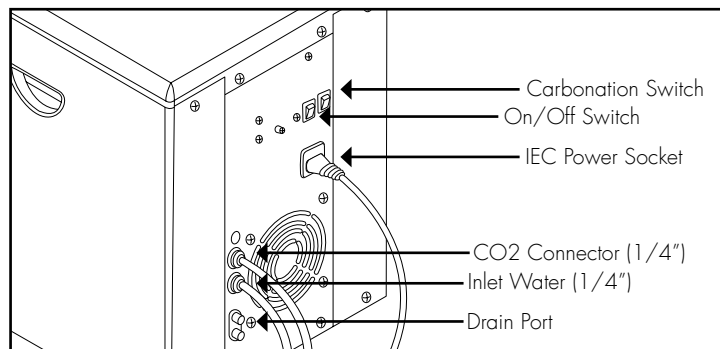


Installation

Major Components



Water & CO2 Connection

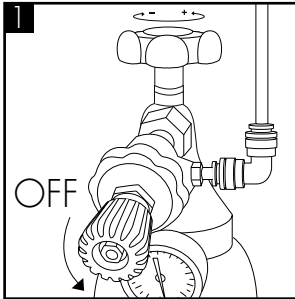


© Copyright Borg & Overström.
This manual is printed by Borg & Overström and shall not be reproduced or copied in anyway.

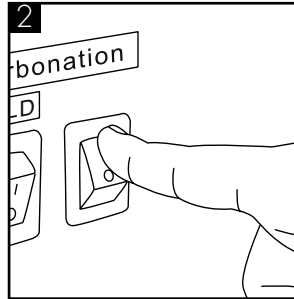
CO2 Bottle Installation (Sparkling Versions Only)



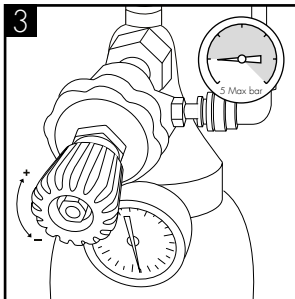
IMPORTANT! ALWAYS ENSURE SECURITY CLIPS ARE USED ON ALL WATER AND CO2 CONNECTIONS.



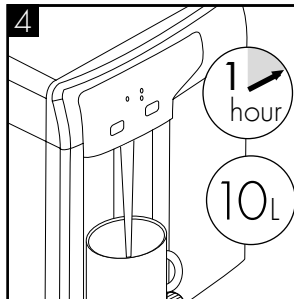
Attach the regulator to the disposable CO2 bottle, ensuring the regulator is closed. Connect the CO2 bottle and regulator to the machine using 1/4 inch pipe.



After completing the water installation, turn on the soda power switch and the pump will run. Do not open the regulator valve until the carbonated switch has been turned on.

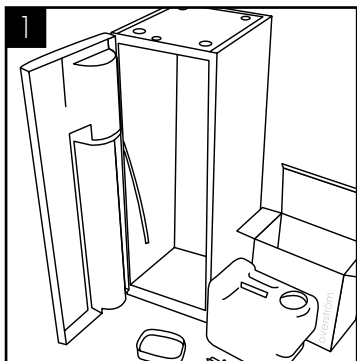


We recommend between 3.5 - 5 bar. Do not exceed 5 bar pressure.

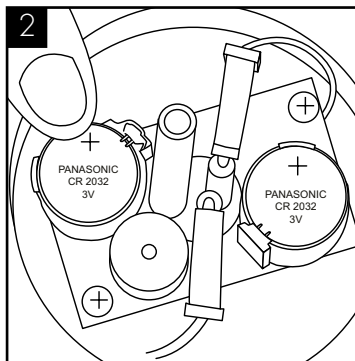


Flush through approximately 10 litres of water. Check and adjust the CO2 pressure accordingly. The machine needs leaving for 1 hour for sparkling water to develop.

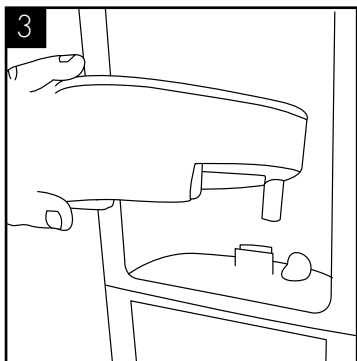
Level Sensor Assembly (floor standing unit only)



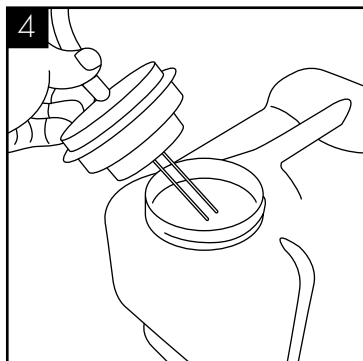
1
Unpack all contents.



2
Unscrew lid, fit both batteries and refit lid.



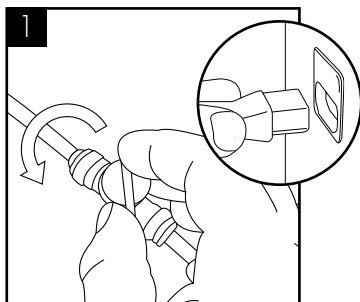
3
Exchange the drip tray.



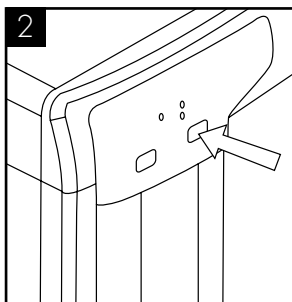
4
Connect the drainage tubing that is pre-fitted down the front left hand side of the cabinet.

Operation

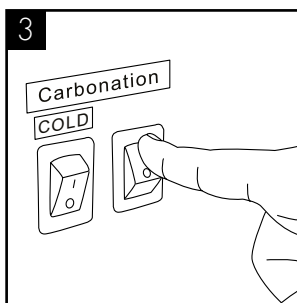
Water Connection & Operation



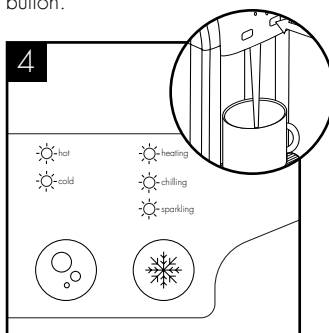
Connect and turn on the water supply. Then connect the power supply (N.B. sparkling variants will fill automatically).



All hot & non-sparkling cold tanks must be purged of air by holding the corresponding button.

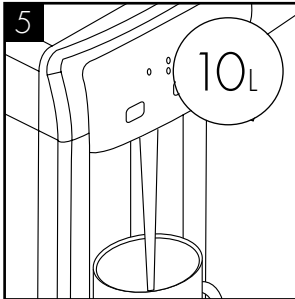


On sparkling models turn on the carbonation switch on the back of the unit.

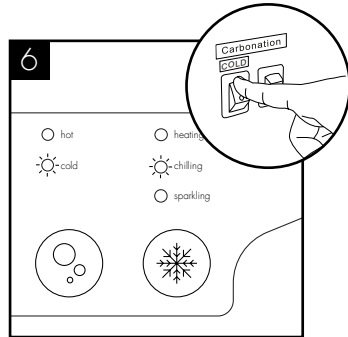


The indicator lights will be lit. Press and hold the cold water button until water comes out. To avoid damage do not turn on the cold power switch until water flows out of the machine. (If applicable)

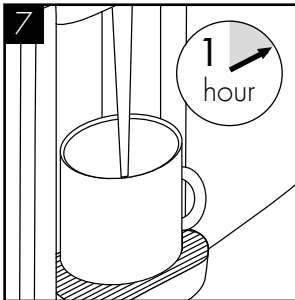
Water Connection & Operation (continued)



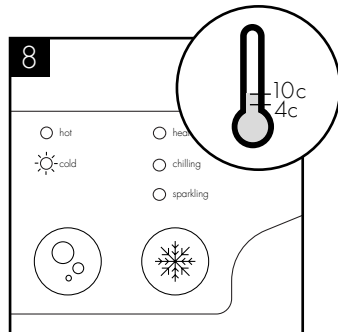
Flush through 10 litres of water before use.



When the cold water switch is turned on, the cold water and chilling LED will be on.

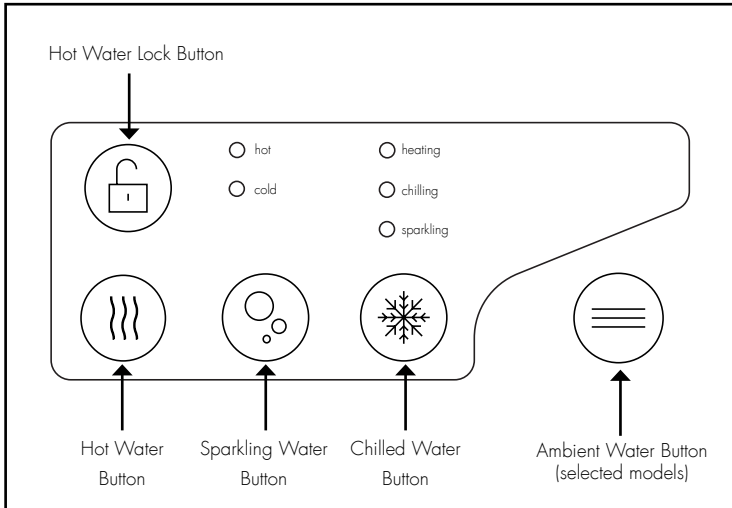


Allow up to 1 hour for the water to reach its minimum temperature.

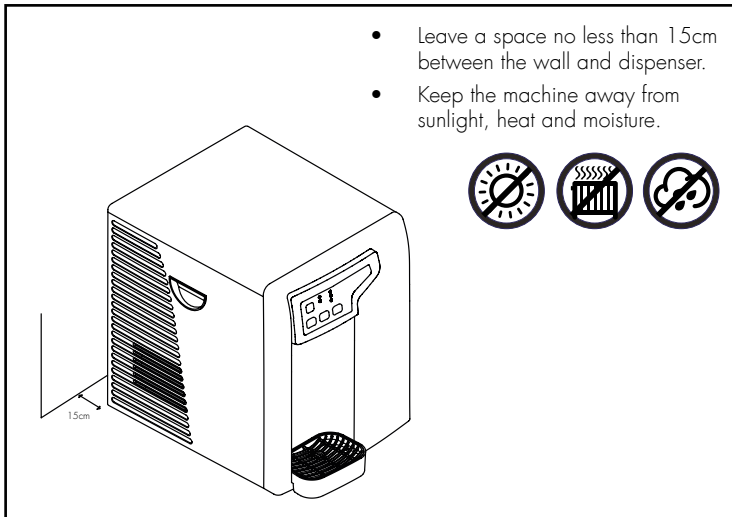


The temperature of cold water can be set from 4c to 10c. When the chilling LED is off the set temperature has been reached. This can take up to one hour.

Functions & Controls

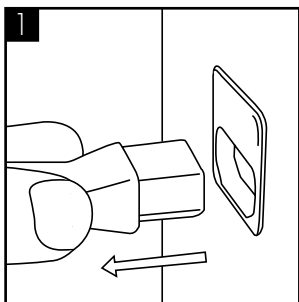


General Safety

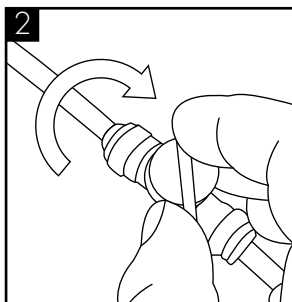


Maintenance & Cleaning

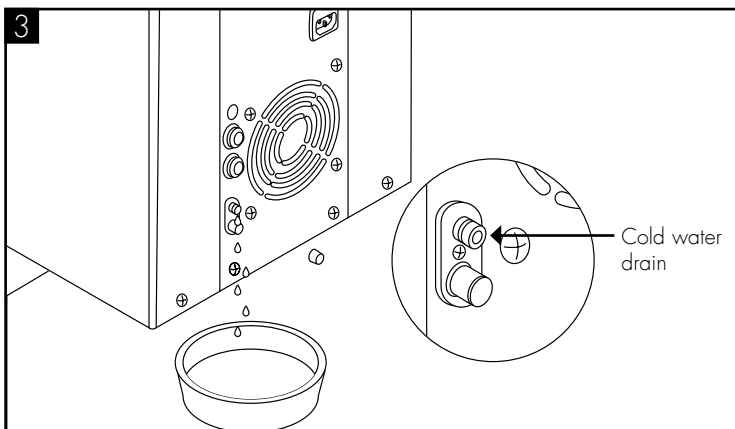
Isolation & Removal



Please make sure the machine is completely disconnected from electricity before carrying out any maintenance work.



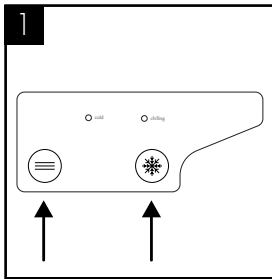
Turn off the water supply.



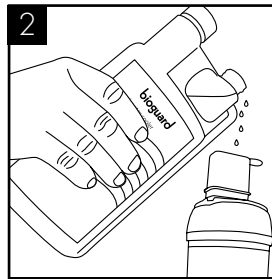
To drain the Direct Chill tank, remove the cap on the back of the machine. We recommend it is refitted immediately upon draining being completed.

Sanitisation Guide

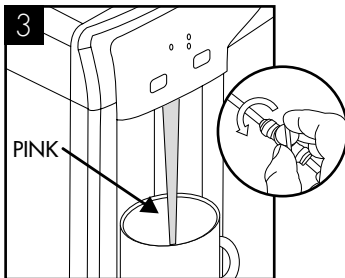
NOTE: Before beginning the sanitation process please ensure that water is turned off at the mains and refer to the MSDS document for further information. Use bioguard hand gel and ensure gloves are worn.



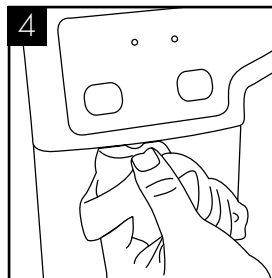
Briefly press cold/ambient dispense button to release internal water pressure from the machine. Remove the existing filter.



Add 25 ml of Bioguard Internal Sanitisation fluid to a clean and empty service filter cartridge. Connect to machine.

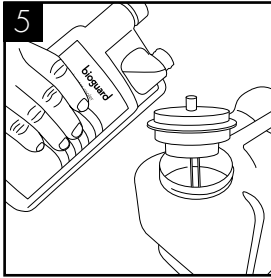


Turn on water, allow service cartridge to fill. Dispense water using the cold button until the water appears pink. Briefly press the ambient button too.

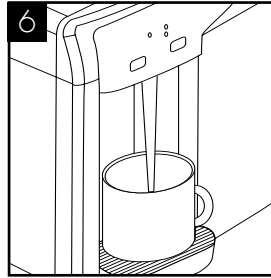


Leave the solution inside machine for sanitisation to take effect (minimum 5 minutes) while thoroughly cleaning the machine externally, pay particular attention to the dispense faucet and button controls.

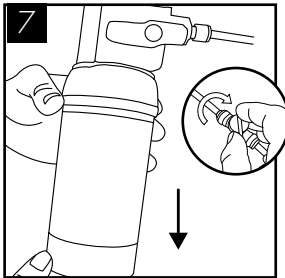
Sanitisation Guide (continued)



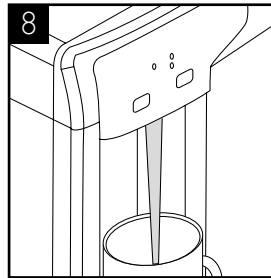
Remember to include the drip tray. If a Waste Overflow System is fitted, empty this and flush through with a small amount of sanitisation fluid if needed.



When the external cleaning (minimum 5 minutes) is completed, flush the machine using the cold button with clean water until the dispense water runs clear. Repeat briefly with the ambient button.



Turn off water and remove the service filter. Retain service filter for reuse. Fit new filter. Turn on water supply.

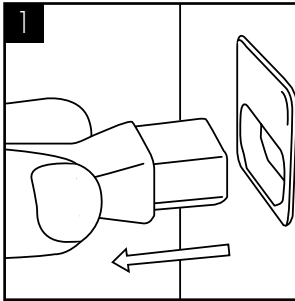


Pre-flush the new filter to waste using the ambient button until the water appears clear and is free of air. Flush through a small amount of water to check all functions.

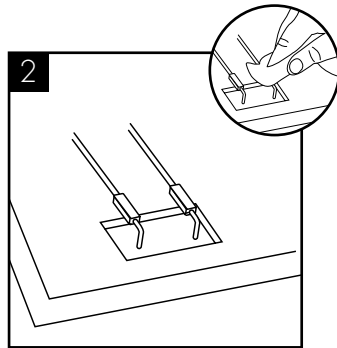
Leak Detection (power cut off) -Sparkling Variants Only - Enhanced leak Detection (flood prevention) -Available as Optional Extra on all variants)

NOTE: If this machine is equipped with a leak detection device. When leaking is detected the dispense operation will be cut off automatically.

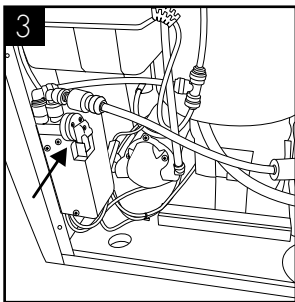
To reset:



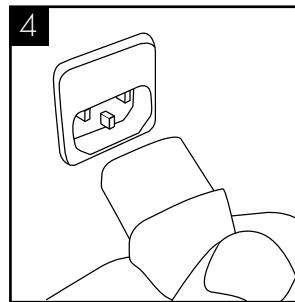
Unplug the machine.



Locate the leak and rectify.
Locate the detection probe which can be found in the bottom front left hand corner. Dry the probes and internal area with a dry cloth.

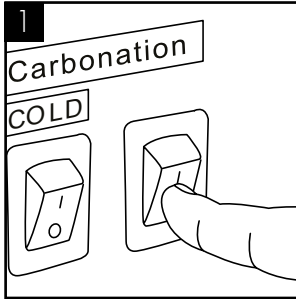


If enhanced leak detector is fitted as optional extra: locate the Leak Detector valve. Reset the lever (push it in).

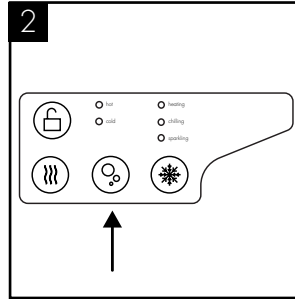


Reconnect the power to machine and test operation.

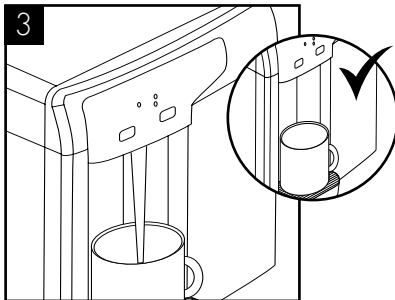
Emptying the Carbonation Tank (if applicable).



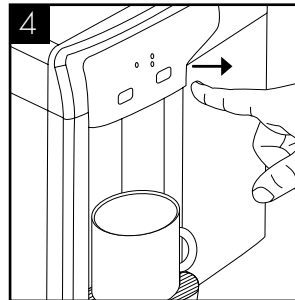
Switch off the Carbonation System switch on the back of the unit.



Press and hold the Sparkling water dispense button until all water is expelled.



The tank is empty of sparkling water when only CO₂ is being released.



Ensure to release the Sparkling water button and take care to avoid releasing excess amounts of CO₂ gas.

Troubleshooting

Fault Diagnosis: Water Dispensing Issues

Problem/Report	Possible Cause	Suggested Action
No Water From Ambient Valve	Water Supply turned off.	Check all Taps/valves/ filters on incoming supply are fitted and are turned on.
	No Electricity/Power Supply.	Check power cord connected and live and machine is switched on.
No Water From Cold Valve	Firstly all as for Ambient Tap.	Carry out checks and actions as for ambient tap.
	Chiller tank frozen - Thermostat not working.	Thaw out and check thermostat. Replace Cold Water thermostat as needed.
	Chiller tank frozen - Pump not working.	Thaw out and check tank pump. Replace pump and or check electricity supply to pump present.
	Leak detector has disabled dispense operation. (if fitted)	Check for internal leakage, ensure probes are dry and reset.
No Water From Hot Valve	If following normal usage: follow guide for 'Ambient' tap.	Carry out checks and actions as for ambient tap.
No Water From All Valves.	Button not being pressed enough.	Press button firmly.
	Controls PCB not working.	Check & replace PCB as necessary
No Water From Sparkling Valve.	Low or no CO2.	Check and replace cylinder as necessary.
	Carbonation System switched off.	Switch on (Switch on back of the machine).
Cold Water not Cold.	Cooling switched off.	Check switch positions as necessary.
	Thermostat set too high.	Decrease Cold Thermostat set point.
	Thermostat not working.	Check & replace as necessary.

Water Dispensing Issues Continued

Problem/Report	Possible Cause	Suggested Action
Cold Water not Cold	Fan not working.	Check and replace, as required.
Hot Water not Hot	Heating cycle incomplete.	Wait for heating LED to stop showing.
	High hot water usage.	Advise user/s.
	Thermostat not working.	Check & replace as necessary.
	Over heat function active (Heating mode LED not showing while heating mode switch on.	Reset switch on overheat temperature sensor.

Fault Diagnosis: Water Leaks

Problem/Report	Possible Cause	Suggested Action
Water lying on top edge of lower door panel and/or bottom of Cabinet	Overflowing Drip Tray Waste Container.	Empty Waste Container and check drainpipe is not blocked.
Water lying in bottom of machine	Level Sensor not working.	Check operation and replace batteries if needed.
	Leak in supply inlet pipe work and/or filter.	Locate and repair accordingly.
	Leak from machine water pipe work fittings.	Locate and repair accordingly.

Fault Diagnosis: Miscellaneous

Problem/Report	Possible Cause	Suggested Action
Bleeping Noise	Level Sensor fitted and tank full.	Empty Level Sensor tank.
No LED Control Lights	No electricity to Machine.	Check power supply and reconnect as necessary.
	Check Fuse in IEC Socket.	Replace if necessary.
	Control PCB not working.	Check & replace as necessary.
Machine Shakes on Start-up	Compressor Starting.	No action needed. This is quite normal.
	Level Surface.	
	Uneven Surface.	Level up machine using adjustable feet.
	Missing Fixings.	Replace missing fixings.
Tripping out Electricity Supply	Machine in high humidity environment.	Reposition if possible.
Intermittent Water Dispense From Sparkling Water Valve	Trapped air in pipe work.	Hold button on to purge air out.
	Button not being pressed enough.	Press button firmly.
	Control PCB not working.	Check and replace as necessary.
Continuous Water Dispense	Button jammed on/not working correctly.	Replace Control PCB and or/ button Panel as needed.
	Debris blocking hole in diaphragm washer.	Dismantle Valve and clean out.
Slow or Intermittent Water Dispense From Hot Valve	From dispense faucet at the completion of the heating cycle (This is expansion/vent water from hot tank only. This can intermittently occur but if regularly, this could indicate limescale build-up inside the hot tank).	Check/Monitor and replace Hot Tank if occurring regularly.

